

Light efficiency:

42 Lumen/Watt

Light quality:

CRI: 55.2

Color temperature:

1908 K

Output: 7328 lm

Peak: 62707 cd

Power: 172.6 W

PF: 1.0

No photo

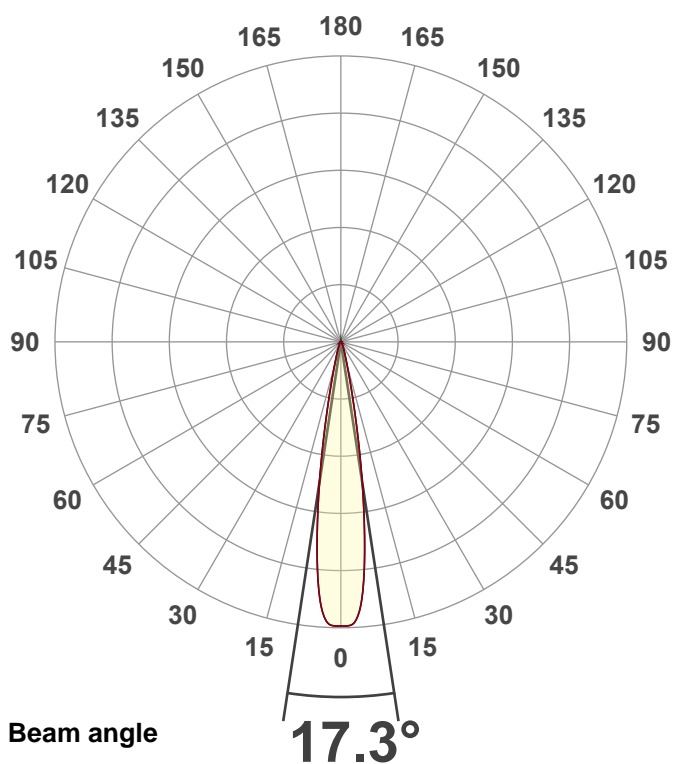
Product name:

40 Hex Panel IP (Full On,Amber)

Item number:

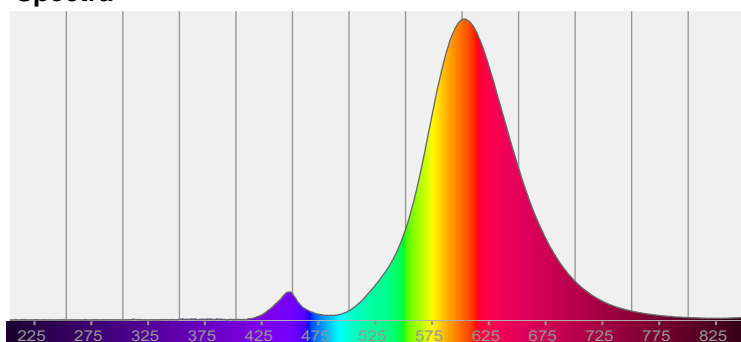
Date and time:

10/9/2025 11:06:27 AM



CIE 1931
x: 0.542
y: 0.417

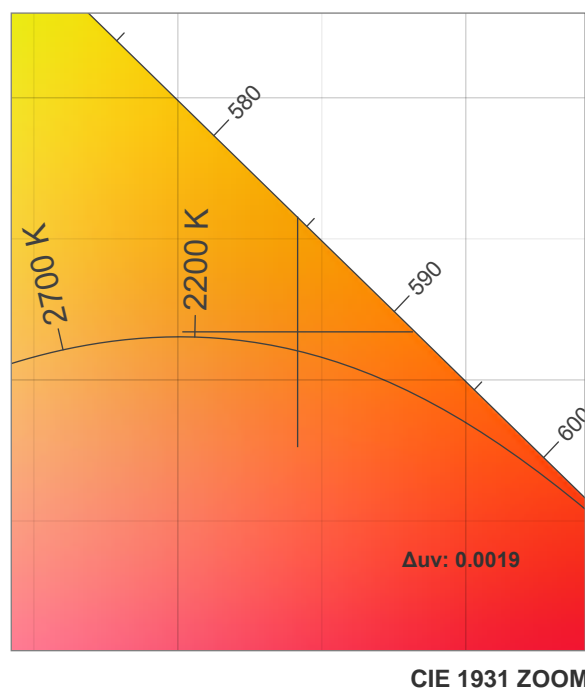
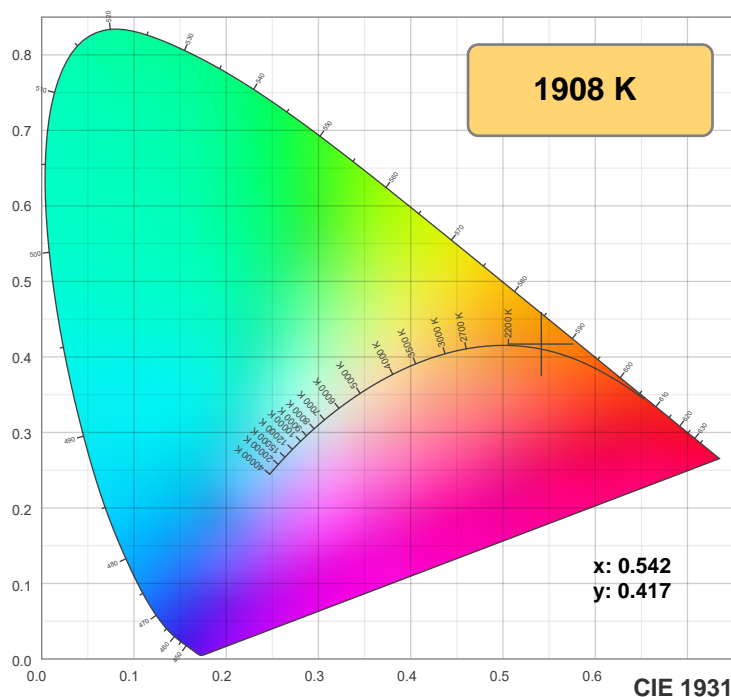
Spectra



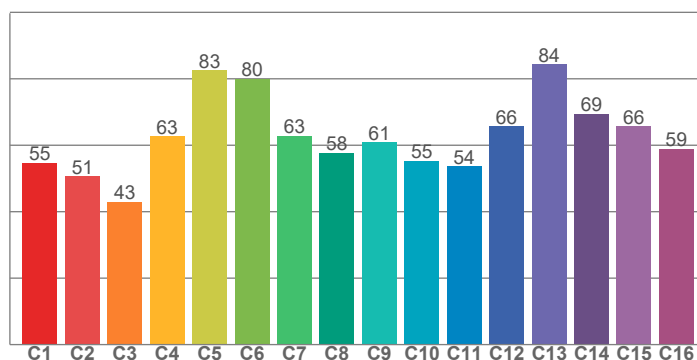
Power

Voltage: 117 V
Current: 1.48 A
Frequency: 0 Hz

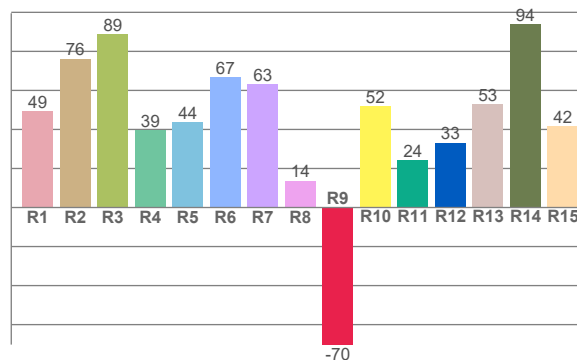
Color details



TM-30: 61.7



CRI: 55.2 (R1-R8)



CRI R values, only R1-R8 are used to calculate final CRI value

R1	R2	R3	R4	R5	R6	R7	R8	R9	R10	R11	R12	R13	R14	R15
49.2	76.3	88.7	39.5	43.8	66.8	63.3	13.8	-70.2	52.0	24.2	33.3	52.8	94.1	41.7

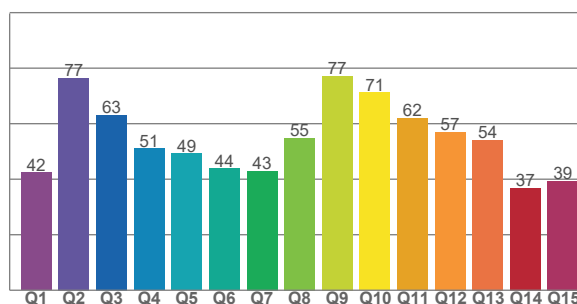
TM30 C values, 16 binned values out of total of 99 C values

C1	C2	C3	C4	C5	C6	C7	C8	C9	C10	C11	C12	C13	C14	C15	C16
54.7	50.6	43.0	62.7	82.5	79.9	62.8	57.8	60.9	55.3	53.6	65.7	84.3	69.4	65.8	58.9

CQS Q values

Q1	Q2	Q3	Q4	Q5	Q6	Q7	Q8	Q9	Q10	Q11	Q12	Q13	Q14	Q15
42.4	76.5	63.2	51.0	49.2	43.8	43.0	54.8	77.1	71.2	62.0	56.9	54.1	36.8	39.4

CQS: 52.1



Color parameters

Color temperature	Color rendering index	Red component	Color fidelity	Color gamut	Color quality scale	Color coordinate cie 1931	Color coordinate cie 1931	Color coordinate	Color coordinate	Color deviation from black body
CCT	CRI	CRI R9	TM30 Rf	TM30 Rg	CQS	x	y	u	v	Δuv
1908 K	55.2	-70.2	61.7	86.0	52.1	0.542	0.417	0.313	0.362	0.0019

TM-30 details

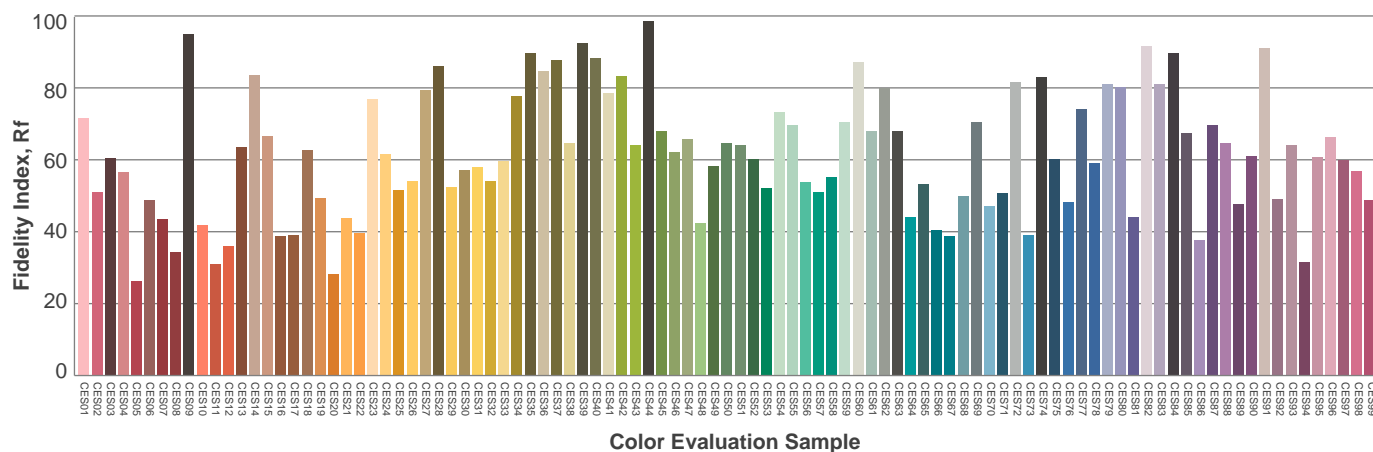
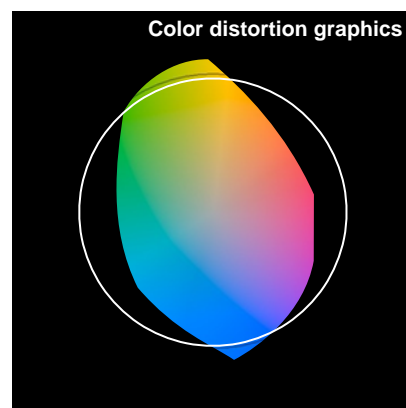
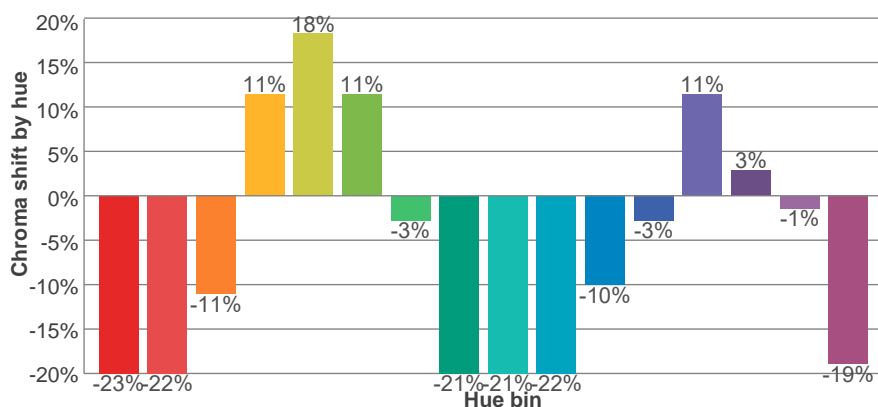
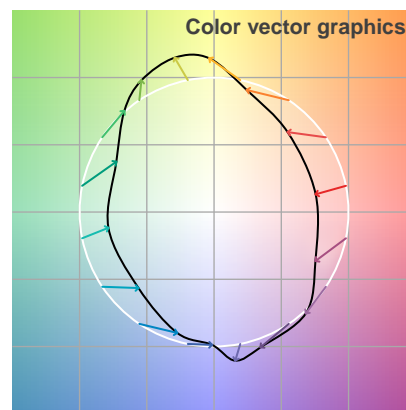
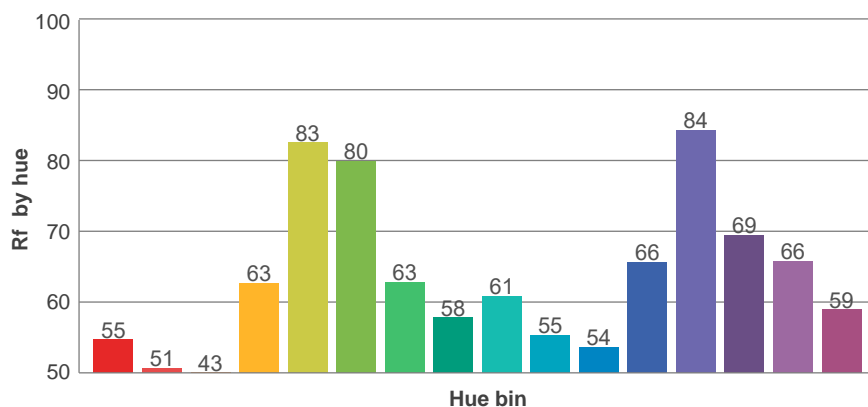
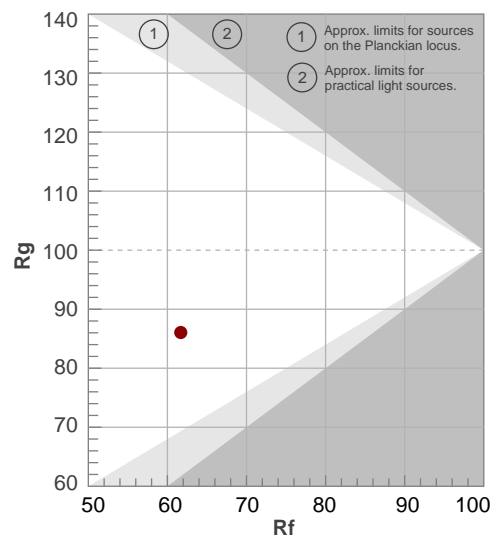
Rf 61.7

Fidelity index Rf

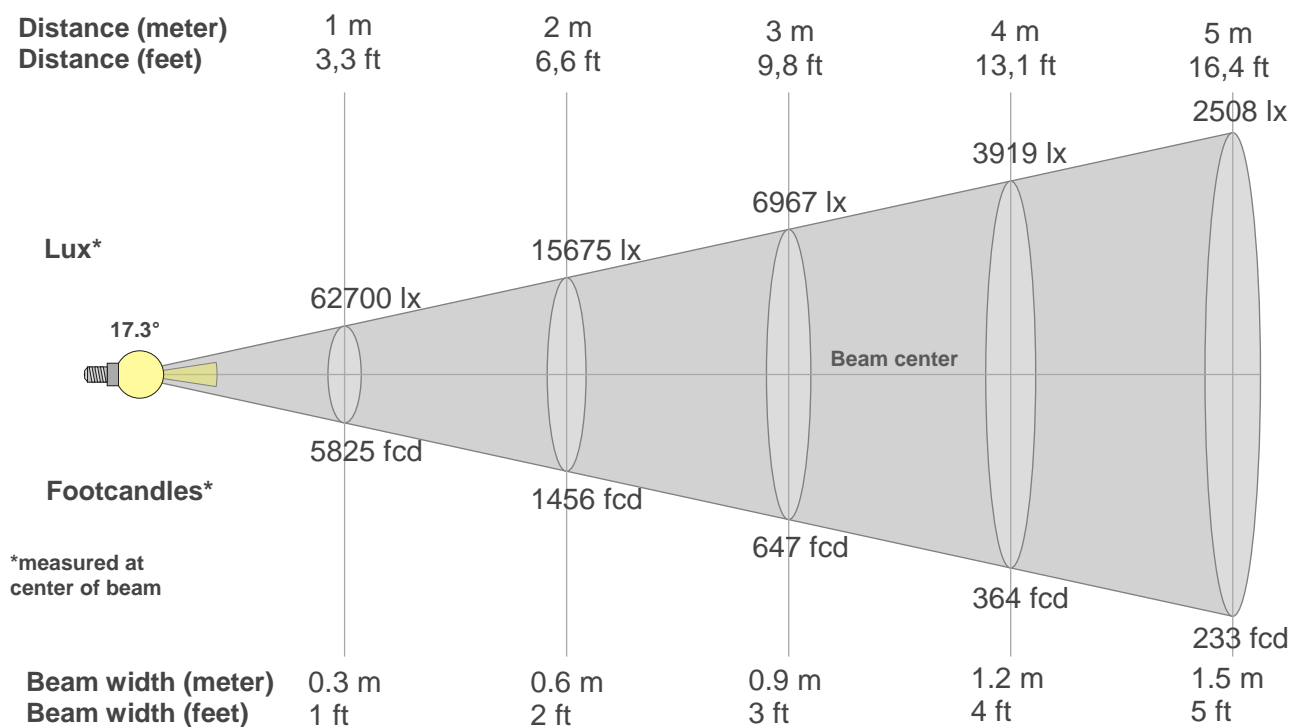
Rg 86.0

Gamut index Rg

Hue Bin	R _f	Shifts (%)	
		Chroma	Hue
1	55	-23%	-2%
2	51	-22%	19%
3	43	-11%	30%
4	63	11%	26%
5	83	18%	6%
6	80	11%	-10%
7	63	-3%	-26%
8	58	-21%	-23%
9	61	-21%	-4%
10	55	-22%	16%
11	54	-10%	27%
12	66	-3%	18%
13	84	11%	-6%
14	69	3%	-27%
15	66	-1%	-25%
16	59	-19%	-21%



Beam details



Beam intensities from 1-20m

1m	2m	3m	4m	5m	6m	7m	8m	9m	10m	11m	12m	13m	14m	15m	16m	17m	18m	19m	20m
3.3ft	6.6ft	9.8ft	13.1ft	16.4ft	19.7ft	23ft	26.2ft	29.5ft	32.8ft	36.1ft	39.4ft	42.7ft	45.9ft	49.2ft	52.5ft	55.8ft	59.1ft	62.3ft	65.6ft
62700lx	15675lx	6967lx	3919lx	2508lx	1742lx	1280lx	980lx	774lx	627lx	518lx	435lx	371lx	320lx	279lx	245lx	217lx	194lx	174lx	157lx
5825fcd	1456fcd	647fcd	364fcd	233fcd	161.8fcd	118.9fcd	91fcd	71.9fcd	58.3fcd	48.1fcd	40.5fcd	34.5fcd	29.7fcd	25.9fcd	22.8fcd	20.2fcd	18fcd	16.1fcd	14.6fcd

Intensities in 0° c-plane

0°	1°	2°	3°	4°	5°	6°	7°	8°	9°	10°	11°	12°	13°	14°	15°	16°	17°	18°	19°
62.7k	62.7k	62.5k	61.6k	59.3k	55.3k	49.6k	42.9k	35.8k	28.9k	22.4k	16.8k	12.5k	9.2k	6.9k	5.3k	4.3k	3.5k	2.9k	2.5k
100%	100%	100%	98%	95%	88%	79%	68%	57%	46%	36%	27%	20%	15%	11%	9%	7%	6%	5%	4%

Intensities in 90° c-plane

0°	1°	2°	3°	4°	5°	6°	7°	8°	9°	10°	11°	12°	13°	14°	15°	16°	17°	18°	19°
62.7k	62.7k	62.5k	61.6k	59.3k	55.3k	49.6k	42.9k	35.8k	28.9k	22.4k	16.8k	12.5k	9.2k	6.9k	5.3k	4.3k	3.5k	2.9k	2.5k
100%	100%	100%	98%	95%	88%	79%	68%	57%	46%	36%	27%	20%	15%	11%	9%	7%	6%	5%	4%

Intensities in 180° c-plane

0°	1°	2°	3°	4°	5°	6°	7°	8°	9°	10°	11°	12°	13°	14°	15°	16°	17°	18°	19°
62.7k	62.7k	62.5k	61.6k	59.3k	55.3k	49.6k	42.9k	35.8k	28.9k	22.4k	16.8k	12.5k	9.2k	6.9k	5.3k	4.3k	3.5k	2.9k	2.5k
100%	100%	100%	98%	95%	88%	79%	68%	57%	46%	36%	27%	20%	15%	11%	9%	7%	6%	5%	4%

Intensities in 270° c-plane

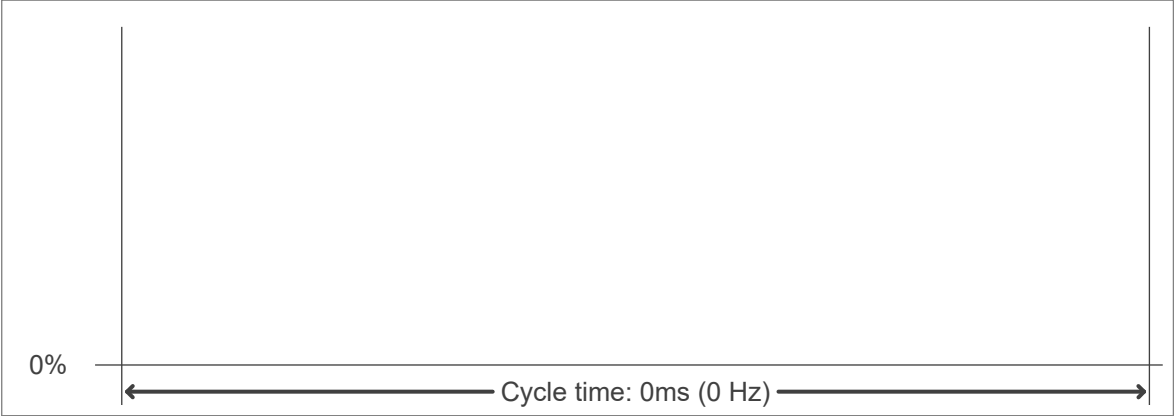
0°	1°	2°	3°	4°	5°	6°	7°	8°	9°	10°	11°	12°	13°	14°	15°	16°	17°	18°	19°
62.7k	62.7k	62.5k	61.6k	59.3k	55.3k	49.6k	42.9k	35.8k	28.9k	22.4k	16.8k	12.5k	9.2k	6.9k	5.3k	4.3k	3.5k	2.9k	2.5k
100%	100%	100%	98%	95%	88%	79%	68%	57%	46%	36%	27%	20%	15%	11%	9%	7%	6%	5%	4%

Beam angle 50%	Field angle 10%	Cutoff angle 2,5%	Intensity ratio in 120° cone	Intensity ratio in 90° cone
17.3°	28.7°	44.3°	97.0%	93.9%

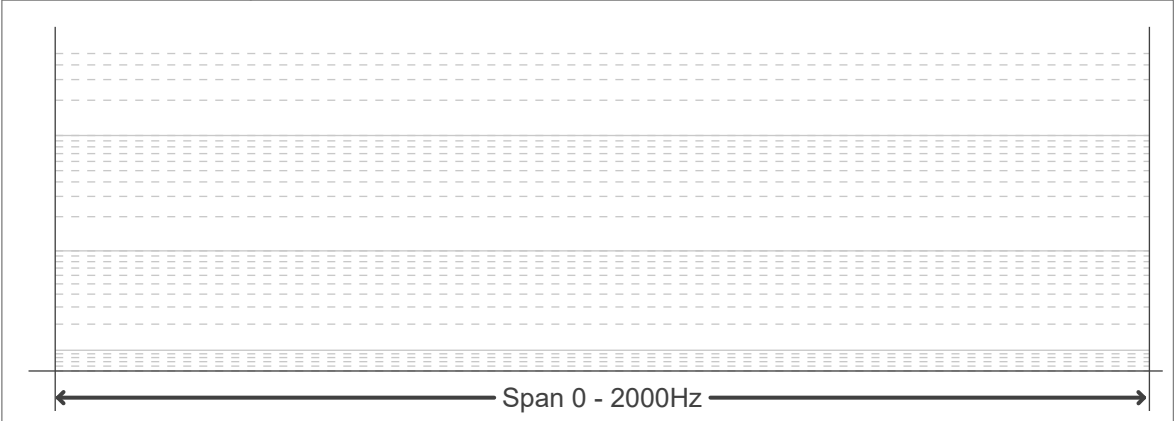
Flicker curve (complete sampled flicker signal)



Flicker frame (frame of one flicker period)



Flicker FFT (frequency scope of flicker curve)



Flicker results:

Flicker frequency:		n/a Hz	
Flicker index:	n/a	JA8/10 40Hz	n/a %
Flicker percentage:	n/a %	JA8/10 90Hz	n/a %
SVM: (Visual flicker)	n/a	JA8/10 200Hz	n/a %
PstLM	n/a	JA8/10 400Hz	n/a %
Mp	n/a	JA8/10 1000Hz	n/a %

Flicker conditions:

Sample rate:	n/a samples/second
--------------	--------------------